

STANDARD ARRIVAL
CHART - INSTRUMENT
(STAR) - ICAO

TRANSITION ALT
10000 FT

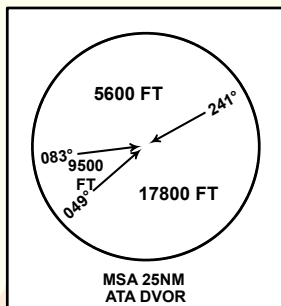
ALMATY APPROACH 118.3
ALMATY RADAR 126.8
ALMATY TOWER 119.4
ALMATY ATIS (EN) 129.8
ALMATY ATIS (RU) 135.1

(RNAV 1 STAR BASED ON GNSS)
ETEDA 1P, TIPSA 1D, TUKTO 1D

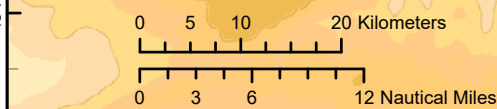
ALMATY
RWY 05L/05R

DIST IN NM
ALT, ELEV IN FT
BRG ARE MAGNETIC
VAR5°E

SURVEILLANCE RADAR REQUIRED



CHANGE: APP FREQ.



KAZAERONAVIGATSIA

AIRAC AMDT 004/2024

TABULAR DESCRIPTION

ETEDA 1P											
Serial Number	Path Descriptor	Waypoint Identifier	Fly - over	Course °M(°T)	Magnetic Variation(°)	Distance NM	Turn Direction	Altitude FT	Speed KT	VPA (°)	Navigation Specification
10	IF	ETEDA	-		5.12	0	-	+FL230	-315	-	RNAV1
20	TF	AA071	-	211(216.6)	5.12	24.4	-	+FL200	-280	-	RNAV1
30	TF	AA073	-	162(167.3)	5.12	8.1	L	@FL190	-280	-	RNAV1
40	TF	AA075	-	240(245.4)	5.12	7.1	R	@FL190	-280	-	RNAV1
50	TF	AA077	-	217(221.6)	5.12	7.1	L	@FL190	-280	-	RNAV1
60	TF	AA087	-	193(197.9)	5.12	7.1	L	@FL190	-280	-	RNAV1
70	TF	USUGA	-	91(96.1)	5.12	17.4	L	+FL140	-280	-	RNAV1
80	TF	AA074	-	162(167)	5.12	7.5	R	+FL120	-280	-	RNAV1
90	TF	AA016	-	131(136.3)	5.12	6	L	-10000	-250	-	RNAV1
100	TF	AA065	-	131(136.4)	5.12	11.8	R	+7500	-230	-	RNAV1
110	TF	GOSLU	-	98(102.9)	5.12	7.3	L	+5200	-210	-	RNAV1

WAYPOINT LIST

ETEDA 1P		
Waypoint Identifier	Coordinates	
ETEDA	442024.00N	0763206.00E
AA071	440052.21N	0761151.55E
AA073	435258.16N	0761419.19E
AA075	435000.20N	0760520.94E
AA077	434440.34N	0755847.95E
AA087	433753.07N	0755546.26E
USUGA	433600.00N	0761934.00E
AA074	432841.45N	0762153.05E
AA016	432421.37N	0762734.78E
AA065	431550.67N	0763842.35E
GOSLU	431413.06N	0764829.77E

TABULAR DESCRIPTION

TIPSA 1D											
Serial Number	Path Descriptor	Waypoint Identifier	Fly - over	Course °M(°T)	Magnetic Variation(°)	Distance NM	Turn Direction	Altitude FT	Speed KT	VPA (°)	Navigation Specification
10	IF	TIPSA	-		5.12	0	-	+FL200	-315	-	RNAV1
20	TF	AA070	-	88(93.5)	5.12	14.9	L	@FL180	-280	-	RNAV1
30	TF	AA072	-	9(13.9)	5.12	7.1	L	@FL180	-280	-	RNAV1
40	TF	REGMU	-	30(34.6)	5.12	7.1	R	@FL180	-280	-	RNAV1
50	TF	AA084	-	50(55.4)	5.12	7.1	R	@FL180	-280	-	RNAV1
60	TF	USUGA	-	151(155.7)	5.12	19.9	R	+FL140	-280	-	RNAV1
70	TF	AA074	-	162(167)	5.12	7.5	R	+FL120	-280	-	RNAV1
80	TF	AA016	-	131(136.3)	5.12	6	L	-10000	-250	-	RNAV1
90	TF	AA065	-	131(136.4)	5.12	11.8	R	+7500	-230	-	RNAV1
100	TF	GOSLU	-	98(102.9)	5.12	7.3	L	+5200	-210	-	RNAV1

WAYPOINT LIST

TIPSA 1D		
Waypoint Identifier	Coordinates	
TIPSA	433809.00N	0753149.00E
AA070	433716.27N	0755214.81E
AA072	434412.27N	0755436.25E
REGMU	435005.00N	0760012.00E
AA084	435408.54N	0760819.02E
USUGA	433600.00N	0761934.00E
AA074	432841.45N	0762153.05E
AA016	432421.37N	0762734.78E
AA065	431550.67N	0763842.35E
GOSLU	431413.06N	0764829.77E

TABULAR DESCRIPTION

TUKTO 1D											
Serial Number	Path Descriptor	Waypoint Identifier	Fly - over	Course °M(°T)	Magnetic Variation(°)	Distance NM	Turn Direction	Altitude FT	Speed KT	VPA (°)	Navigation Specification
10	IF	TUKTO	-		5.12	0	-	+FL220	-315	-	RNAV1
20	TF	AA071	-	162(167.3)	5.12	11	-	+FL200	-280	-	RNAV1
30	TF	AA073	-	162(167.3)	5.12	8.1	-	@FL190	-280	-	RNAV1
40	TF	AA075	-	240(245.4)	5.12	7.1	R	@FL190	-280	-	RNAV1
50	TF	AA077	-	217(221.6)	5.12	7.1	L	@FL190	-280	-	RNAV1
60	TF	AA087	-	193(197.9)	5.12	7.1	L	@FL190	-280	-	RNAV1
70	TF	USUGA	-	91(96.1)	5.12	17.4	L	+FL140	-280	-	RNAV1
80	TF	AA074	-	162(167)	5.12	7.5	R	+FL120	-280	-	RNAV1
90	TF	AA016	-	131(136.3)	5.12	6	L	-10000	-250	-	RNAV1
100	TF	AA065	-	131(136.4)	5.12	11.8	R	+7500	-230	-	RNAV1
110	TF	GOSLU	-	98(102.9)	5.12	7.3	L	+5200	-210	-	RNAV1

WAYPOINT LIST

TUKTO 1D		
Waypoint Identifier	Coordinates	
TUKTO	441136.00N	0760830.00E
AA071	440052.21N	0761151.55E
AA073	435258.16N	0761419.19E
AA075	435000.20N	0760520.94E
AA077	434440.34N	0755847.95E
AA087	433753.07N	0755546.26E
USUGA	433600.00N	0761934.00E
AA074	432841.45N	0762153.05E
AA016	432421.37N	0762734.78E
AA065	431550.67N	0763842.35E
GOSLU	431413.06N	0764829.77E